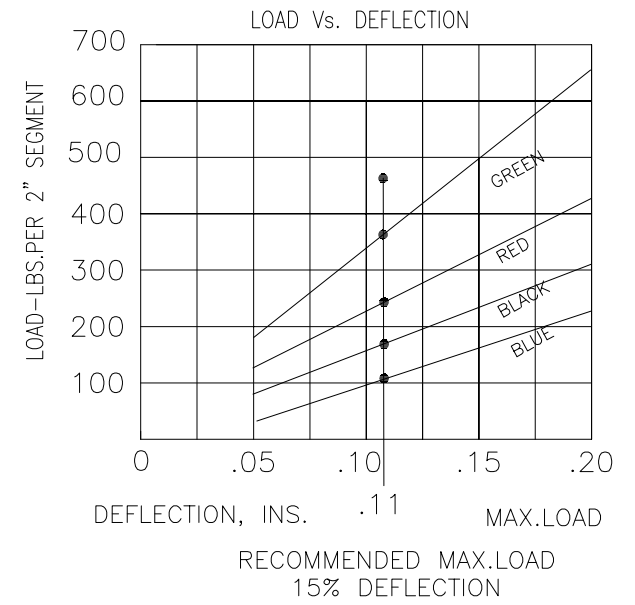
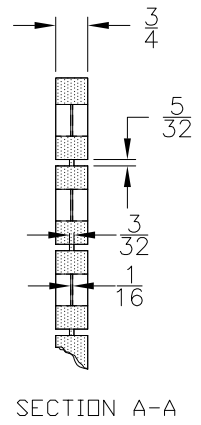
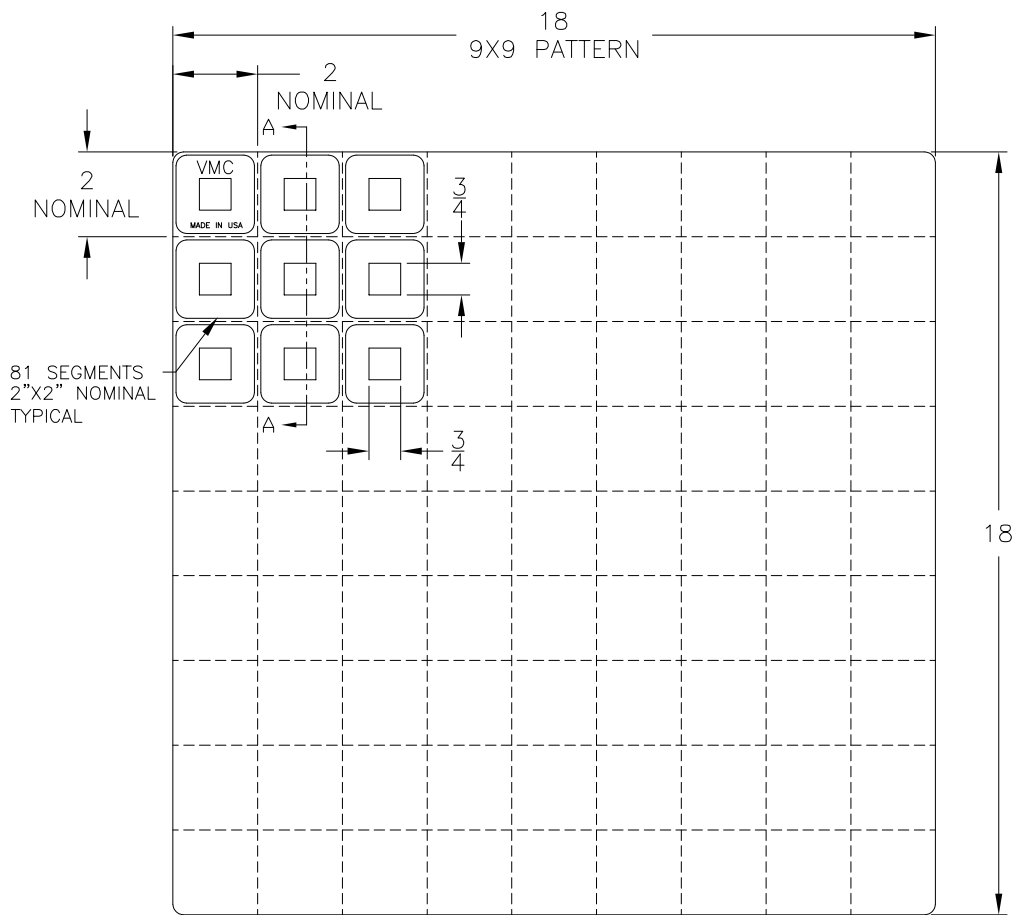


REV.	DESCRIPTION	DATE	BY



PART NUMBER	MODEL DESIGNATION	RATED COMPRESSIVE LOAD ON 2"X2"SEGMENT, (LBS.)	COLOR CODE
390750-30	Maxi-Flex Pad	120	BLUE
390750-40	Maxi-Flex Pad	180	BLACK
390750-50	Maxi-Flex Pad	240	RED
390750-60	Maxi-Flex Pad	360	GREEN
390750-70	Maxi-Flex Pad	480	GRAY

- NOTES:
1. ALL DIMENSIONS ARE IN INCHES. INTERPRET PER ANSI Y14.
 2. ALL DIMENSIONS ARE NOMINAL AND FOR REFERENCE ONLY.
 3. TABLE IS AVERAGE DESIGN DATA FOR REFERENCE.
 4. MOLDED ELASTOMERIC PAD, SECTIONABLE BY CUSTOMER.
 5. ADDITIONAL ELASTOMER TYPES & CAPACITIES AVAILABLE, CONTACT THE VMC GROUP FOR APPLICABILITY

- NOTE:
1. RATED LOAD PROVIDES 15% (0.11 INCH) DEFLECTION.
 2. FOR INCREASED DEFLECTION, MAXI-FLEX CAN BE STACKED WITH 16 GAUGE SHIMS SEPARATING THE LAYERS.
- OTHER MATERIALS, COMPOUNDS, OR FINISHES WITH EQUAL OR SUPERIOR PROPERTIES MAY BE SUBSTITUTED AS THEY BECOME AVAILABLE.

CERTIFIED FOR:

JOB NAME: _____

CUSTOMER: _____

CUSTOMER P.O.: _____

SALES ORDER: _____

**MODEL MAXI-FLEX 120-480 LBS.
2 SQUARE INCH ELASTOMERIC PAD**



SCALE:	NONE	Member VISCMA
SHEET:	1 OF 1	
DRAWING NO.:		REVISION